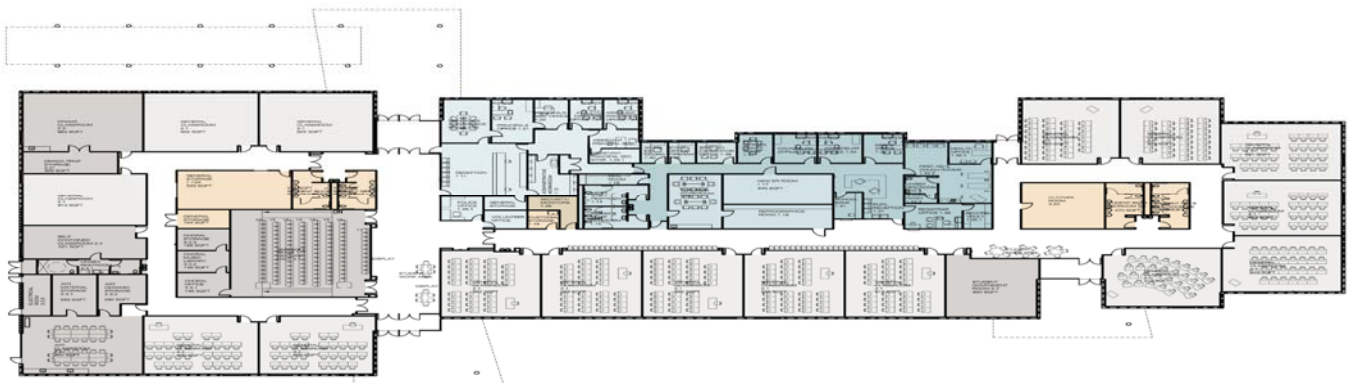


Construction at Boulder City High School

Boulder City High School was one of five CCSD schools selected for phased replacement in 2003 as part of the 1998 Capital Improvement Plan. It was decided with community input at that time not to do a full school replacement, but to pursue a phased replacement process over time instead. Phase I was funded in 2003 and completed by 2005. This phase included a new gymnasium, science classrooms, computer labs, regular classrooms, auto shop, band room, and the old gymnasium was preserved and converted to CCSD's first high-tech library.

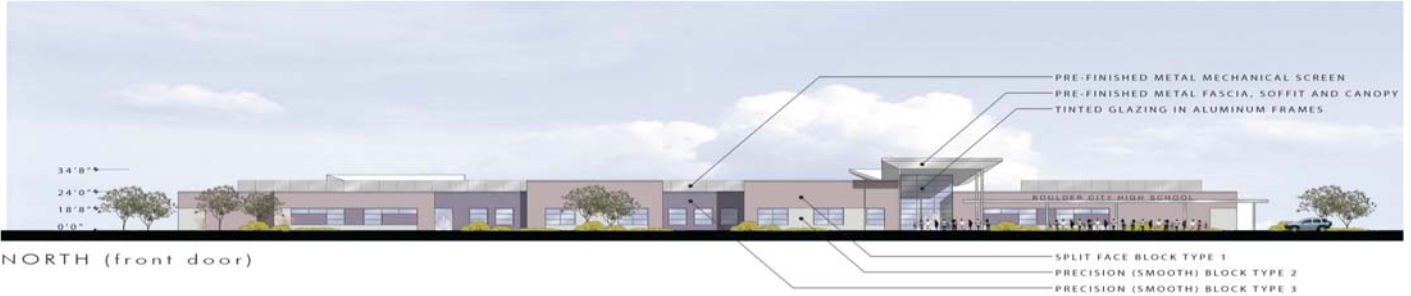


Phase II of Construction will have two stages of demolition. Stage 1 of demolition will consist of removing two thirds of the 200 hallway and the entire 300 hallway. SH Architecture will employ a “ship in a bottle” construction approach and temporary walls and/or barriers will be in place to prevent student access during the construction process. Once the new building is complete, the second demolition stage will take place to remove the administration building, the entire 100 hallway, and the remaining section of the 200 hallway.



Phase II Construction plan includes administrative offices, several classrooms, and a lecture hall.

The exterior views of the new building will reflect 1930's and art deco influences, as well as the long, low, sloping roof styles from the original school's architecture.



NORTH (front door)



WEST



SOUTH (courtyard)



EAST (towards gym)

The remaining phases in the master plan from 2005, include the performing arts center and fields and site improvements. However, to date, funding for these two phases has not been approved.

